

Lauderdale
POPULATION 2,271



Lauderdale Crier

City of Lauderdale, MN JANUARY-MARCH 2024

MESSAGE FROM THE MAYOR

Winter Greetings,

First, thank you to Police Chief Jon Mangseth for his years of service to the City of Lauderdale. Jon's last day was January 31 and we wish him all the best in his retirement. Jon is quick to note that he owes his start in law enforcement to Lauderdale as he was hired when St. Anthony expanded their department to cover Lauderdale in the early 1990s. He embraced all of the federal and state resources to build a top-notch, modern police department that is a model for police departments large and small throughout the country.



*Retiring Police Chief
Jon Mangseth.*

We look forward to working with Captain Jeff Spiess who was promoted to take Jon's place as chief. New officers have been hired to replace Jon and other long-time officers retiring this spring. More information about the new officers can be found on page 5.

I also want to bring to your attention a recent city council vote that affects how you vote. There will be three elections in 2024; the first is March 5. Lauderdale residents will continue to vote at Lauderdale City Hall on election day but behind the scenes Ramsey County will provide absentee voting services. This change was sparked by recent legislation that altered the financial calculus for administering elections in-house. The City Council signed a contract with Ramsey County to manage election services. See page 4 for the 2024 election calendar and absentee voting location information.

As someone who has navigated two major and expensive sanitary sewer repairs, I am pleased to report that funding is available for sewer repairs through a grant the City received from the Metropolitan Council (MC). The MC anticipates this funding to be on-going but this first year Lauderdale has \$25,000 to award to eligible property owners. Sewer repairs generally come out of the blue and are expensive. The grant funds together with the City's ability to help finance sewer repairs in excess of the grant award will allow property owners to rest easier knowing they are supported when an emergency happens. See page 5 for eligibility information but don't hesitate to contact city staff to discuss.

This would be our second winter season with Falcon Heights staff plowing our streets if it ever snowed! The City Council met with the Falcon Heights public works staff to learn about their plowing operations and new technology they implemented. This winter is so different from our last and maybe still a welcome break after last year.



The Lauderdale City Council and public works staff from both cities met in Falcon Heights this fall to discuss plowing operations.

Until Spring,
Mayor Mary Gaasch

JANUARY — MARCH COMMUNITY CALENDAR

Tuesday, January 9	City Council Meeting	7:00 p.m.
Monday, January 15	Martin Luther King Jr Day	City Hall Closed
Tuesday, January 23	City Council Meeting	7:00 p.m.
Tuesday, February 13	City Council Meeting	7:00 p.m.
Monday, February 19	President's Day	City Hall Closed
Tuesday, February 27	City Council Meeting	7:00 p.m.
Tuesday, March 12	City Council Meeting	7:00 p.m.
Tuesday, March 26	City Council Meeting	7:00 p.m.

CITY & EMERGENCY CONTACT INFORMATION

City Hall Hours: Monday - Friday 8:00 a.m. to 4:30 p.m. Phone: (651) 792-7650 www.lauderdalemn.org

CITY COUNCIL MEMBERS

Mayor Mary Gaasch
1736 Malvern St; 651.645.5918

Council Member Jeffrey Dains
1743 Carl St; 651.645.7068

Council Member Sharon Kelly
1814 Malvern St; 651.230.3062

Council Member Duane Pulford
1757 Eustis St; 507.254.5166

Council Member Evan Sayre
1841 Carl St; 651.343.2782

To send an email to all council and staff:
council@lauderdalemn.org

CITY STAFF

Main Office: 651.792.7650
Fax: 651.631.2066

Heather Butkowski 651.792.7657
City Administrator
heather.butkowski@lauderdalemn.org

Jim Bownik 651.792.7656
Assistant to the City Administrator
jim.bownik@lauderdalemn.org

Miles Cline 651.792.7655
Deputy City Clerk and Treasurer
miles.cline@lauderdalemn.org

Gordy Beck 651.792.7662
Public Works Coordinator
gordy.beck@lauderdalemn.org

Tom Douvier 651.792.7661
Public Works Utilities and Maintenance
tom.douvier@lauderdalemn.org

EMERGENCY NUMBERS

Police Emergency: 911
Police Department: 612.782.3350

Fire Emergency: 911
Fire Department: 651.224.7811

Ramsey County Dispatch: 911
Ramsey County Dispatch Non-emergency Number: 651.767.0640

Water Emergency (St. Paul Regional Water): 651.266.6868

Sewer Emergency: 911 or
651.767.0640

Illicit Discharges to the Storm Sewer:
911 or 651.792.7650 (business hours)

Xcel Energy Electric Emergency or
Outage: 1.800.895.1999

Xcel Energy Gas Emergency or Gas
Odor: 1.800.895.2999

COMMUNITY PARTNERS

Hello from St. Anthony Park Area Seniors!

Lauderdale City Hall Classes and Services

- Senior exercise class on Fridays at 1:00 pm at Lauderdale City Hall!
- Independent contractor **foot care** nurse offers appointments at the Lauderdale City Hall. Call to schedule.



Events at SAPAS Office Building at 2200 Hillside Avenue, St. Paul, MN 55108

- Board games and fellowship on the 4th Tuesday of the month from 10:00-11:45 am.
- Card-making workshop on February 21 from 9:30-11:30 am.

Other Services and Events

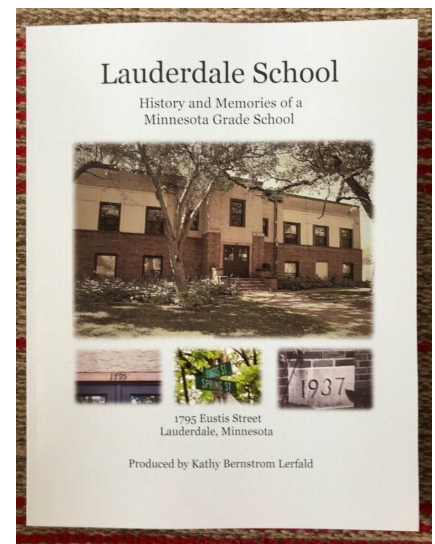
- Caregiver support group the first Thursday each month 10-11:00 am.
- Virtual chair yoga on Mondays from 9:30-10:30 am.
- Virtual lunch meet-ups with BINGO on Wednesdays at noon.
- Volunteers available for rides to health appointments, home chores, technology, and caregiver reprieve.

Visit our website at www.sapasseniors.org for more updates. You may always contact us at 651-642-9052 or office@sapasseniors.org to find out more about our activities and services.

Lauderdale School Book

Congratulations to Kathy Bernstrom Lerfald on completing her book *Lauderdale School: History and Memories of a Minnesota Grade School*. This labor of love has been in the works for some time and now we can enjoy it.

The books are still available for pick up at Lauderdale City Hall for \$35.00 or they can be shipped for an additional \$10.00. Contact Kathy at katyelle@pobox.com to learn more.



State Electrical Inspector

Occasionally, city staff are asked how to apply for electrical permits. For most Minnesota cities, electrical permits are issued by the State and don't go through the same process as building permits. The State assigns an electrical inspector to each city. Lauderdale's current inspector is Gerald Jones. Property owners can access electrical permit applications and schedule inspections through Gerald's website: www.jonesinspectionsinc.com.

Gerald requests forms be submitted before 8:00 a.m. for same day inspections. If you have questions, call 651-489-9337 during his office hours which are Monday – Friday from 7:00 a.m.—8:30 a.m.



*Gerald Jones,
Lauderdale's
state electrical
inspector.*

COMMUNITY EVENTS

Rink Hours (weather dependent) **Lauderdale Community Park** **1885 Fulham Street**

Monday – Thursday: 4 p.m. – 9 p.m.
Friday: 4 p.m. - 10 p.m.
Saturday: 12 p.m. - 10 p.m.
Sunday: 12 p.m. – 9 p.m.

Open skating begins at noon on school
release days for ISD #623.

The Warming House
hours are posted on the
calendar on the
City's homepage.

If weather doesn't co-
operate or we are short
staff, we may limit the
hours of the Warming
House. Those changes
will be posted to
the website.

Celebrate Winter!?

Maybe we have already
moved on to spring?

Each year we try to keep the
rinks open until at least mid-
February. Unfortunately, but
for a brief cold spell when we
made a lot of ice, the weather
hasn't cooperated. The rinks
this season will be open as long
as the weather allows us to
maintain ice.

2024 Election Calendar

Friday, January 19

Presidential Primary absentee voting begins

Tuesday, February 13

End of pre-registration for Presidential Primary

Friday, February 16

Direct ballot early voting begins

Tuesday, March 5

Presidential Primary Election Day, Vote from
7:00 a.m. to 8:00 p.m. at Lauderdale City Hall

Friday, June 28

Primary Election absentee voting begins

Tuesday, July 23

End of pre-registration for Primary Election

Friday, July 26

Direct ballot early voting begins

Tuesday, August 13

Primary Election Day, Vote from
7:00 a.m. to 8:00 p.m. at Lauderdale City Hall

Friday, September 20

General Election absentee voting begins

Tuesday, October 15

End of pre-registration for General Election

Friday, October 18

Direct ballot early voting begins

Tuesday, November 5

General Election Day, Vote from
7:00 a.m. to 8:00 p.m. at Lauderdale City Hall

Voting Options in 2024

All Lauderdale residents may vote absentee from
home or at a Ramsey County voting center. All
Lauderdale residents also may vote at Lauderdale
City Hall on election day.

The Minnesota legislature expanded the direct bal-
lotting absentee voting window beginning in 2024.
As a result, Lauderdale staff will no longer handle
in-person absentee voting. Ramsey County will
handle all in-person absentee voting.

If you want to vote absentee *by mail*, please con-
tact Ramsey County Elections staff for an absen-
tee ballot application or apply online at
www.mnvotes.org.

If you want to vote absentee *at a Ramsey County
Voting Center*, check out [www.ramseycounty.us/
residents/elections-voting](http://www.ramseycounty.us/residents/elections-voting). The locations are:

- Ramsey County Library in Roseville
- Ramsey County Library in Shoreview
- Ramsey County Elections Office in St. Paul

Residents who haven't voted in Lauderdale before
are encouraged to register ahead of the Presiden-
tial Primary election (by February 13) to minimize
your wait time on election days. Contact Ramsey
County Elections for a voter registration form or
apply online at www.mnvotes.org.

Election Day voting will still happen at Lauder-
dale City Hall. The first election is the Presiden-
tial Primary on March 5. The polls will be open
from 7:00 a.m. until 8:00 p.m.

COMMUNITY NEWS

Lauderdale Awarded Grant to Assist Property Owners with Sewer Repairs

The 2024 Private Property Inflow and Infiltration Grant Program of the Metropolitan Council provides Lauderdale residents with grants up to \$5,000 to help with repairs that will remove and prevent clear water from entering the wastewater treatment system.

Sanitary sewer laterals connect private properties to the city sanitary sewer. When they experience cracks and deterioration that come with age or when roots break through the pipes, it allows groundwater into the system. This clear water doesn't need to be treated as wastewater. It takes up space in the wastewater system causing costly sewer backups into homes and buildings or sewer overflows into rivers and lakes.

Qualifying Work:

- Private lateral repair and / or replacement
- Foundation drain disconnects with new sump pump, if associated with the foundation drain disconnect
- Sewer lateral inspection and cleaning costs if televising and cleaning result in repair or replacement of sewer lateral

Grant awards may be 50% of eligible costs up to \$5,000. Qualified spending on eligible work can happen between Jan. 1, 2024 and Dec. 31, 2024. Contact City Administrator Heather Butkowski (651.792.7657 or heather.butkowski@lauderdalemn.org) to learn more.



St. Anthony Police Department Adds Two New Officers

Welcome to Officer Tristan Norlien. He was raised in Columbia Heights and now resides in Minneapolis. He is a graduate of St. Anthony High School and served four years in the US Marine Corps. Following service, he pursued his passion for law enforcement. He has an AS degree in Law Enforcement and completed Law Enforcement Skills Training at Hennepin Technical College in May 2023.

Officer Keeton Roden grew up in Rogers. He graduated from Rogers High School where he played hockey. Roden attended and graduated from North Hennepin Community College's academic program and then Law Enforcement Skills Training at Hennepin Technical College.



We look forward to working with our new officers and encourage residents to say hello when you see them on patrol.

Winter Parking: Avoid Getting a Ticket

Winter parking restrictions begin after 2-inches of snowfall. All cars must be off the streets for 48-hours or until curb-to-curb snow removal has been completed *after the snow has stopped*.

During heavy snow events, plows may return a couple of times to keep the roads open; after their final plow after the snow has stopped, you can move vehicles back onto the streets.

Avoid a ticket; if snow is predicted overnight, move your vehicles off the street ahead of time. Residents are welcome to park off of Roselawn Avenue in the Community Park parking lot until plowing is completed. Please move your vehicles from the parking lot after the roads are plowed so we can remove the snow. Occasionally, cars are left in the parking lot for days after a snow storm and we have to tow them. We would prefer not to have to do that.



PUBLIC SAFETY UPDATES



Winter Wise – Sgt. Mike Huddle

Winter. It brings snow, it brings cold, and it brings opportunity for crime. We can't stop the snow or the cold, but we can prevent falling victim in some simple ways.

If you warm up your vehicle at the start of a cold day, do so wisely. If you're equipped with a remote start, that's ideal. If not, then leaving your vehicle unattended with the engine running exposes you to vehicle theft and may result in a long cold walk to work or home. While inconvenient, remaining with your vehicle while it warms up can deter would-be thieves seeking an easy opportunity. Sitting in a cold car as it warms up is somehow not as cold as standing outside waiting for the police to arrive while wondering who has your car and what they're doing with it.

We see thefts like this occur every winter. It's preventable. Simply running into the gas station, grocery store or pharmacy to quickly pick up an item while your running car sits outside waiting to be stolen is risky. Yet, how often do you see it every winter? It takes only a few seconds to drive off in your already running vehicle and whatever you left inside of it.

This is also a good time to remind about winter parking prohibitions during snow events. Public Works crews work hard to clear snow from city streets to allow safe passage of traffic and access to emergency vehicles. You're part of the solution to allow quick clearing of snow when you move your vehicle off the street and park in a driveway or open parking lot. City ordinance 6-1-6 prohibits parking of a vehicle on any city street for a period of 48 hours, "commencing immediately after two inches (2") or more of continuous snowfall, or until snow removal has been completed on that street, whichever occurs first." Please share this information with guests and visitors staying with you to allow them to avoid being plowed around, ticketed, or towed.

As always, keep your vehicles locked, and remove your valuables (including garage door openers) to prevent theft. Most thefts from auto reported to the Police Department are from unlocked vehicles. Having your vehicle entered by someone can leave you feeling vulnerable. If your keys, garage door opener, or personal information are stolen from your car, you may be even more vulnerable to additional crimes. Most of these measures are common sense and easy to implement. Take simple steps to protect yourself, your family, and your property and you should have less worries. Winter already provides us with enough to contend with. Stay vigilant, stay safe, and stay warm.

If you'd like more crime information, prevention tips, reports, or have questions, please contact St. Anthony PD at 612.782.3350. You can also follow SAPD on Facebook and Twitter for alerts, news, and updates.

If you need to report a crime or suspicious activity, please call 911.

Fire Safety Tip: Remove Snow from around Hydrants



ENVIRONMENTAL STEWARDSHIP



**MISSISSIPPI
WATERSHED
MANAGEMENT
ORGANIZATION**

THE TRUTH ABOUT SALT

There is no such thing as an environmentally friendly salt or de-icer. All such chemicals cause damage to our waterbodies, plants, wildlife, and infrastructure. You should avoid using them as much as possible.

WHEN TO USE SALT

If you apply salt or de-icer, do it after the storm is finished. Clear off any loose and/or compacted snow first. Apply the product on ice only; do not apply it on dry pavement. Temperatures often drop after a snowstorm, so double-check the label on your salt or de-icer product to make sure it will work before you apply it. Rock salt doesn't work below 15°F.

A SALTY MESS

Just one teaspoon of salt is enough to pollute five gallons of water - forever.

Salt and de-icers contain chloride, which is toxic to fish and plants. When the snow and ice melt, the chloride travels through storm drains into our rivers and lakes. Once there, it's nearly impossible to remove.

HOW MUCH SALT TO USE

More salt does not equal faster melting — just more pollution and wasted money. Shoot for a 3-inch spread between salt granules. For \$10–\$20, a hand spreader can make the job easier and more accurate. To be more exact, try to apply no more than 1 pound per 250 square feet of pavement (*Tip: A regular-sized coffee mug typically holds about 1 pound of salt.*).

WHAT ABOUT SAND?

Use sand when it's too cold for salt to work. Sprinkle just enough to provide traction on walkways. Sweep up any excess after the ice melts so that it doesn't get carried into storm drains (sand pollutes too). Don't bother mixing sand and salt together. They serve two completely different purposes. Sand is useless in wet melting snow, and slush.

Recycle Holiday Trees, Lights, and Cords

Did you know holiday trees, lights, and electrical cords can be recycled?

Ramsey County's year-round household hazardous waste collection site accepts holiday strings and electrical cords. The site is located at 5 Empire Drive, St. Paul, MN 55103. It is open 9 am to 4 pm Fridays and Saturdays.

Holiday trees can be brought to Arden Hills, Frank and Sims, Midway, and White Bear Township yard waste sites. Those sites accept trees and branches, which are turned into mulch. Please remove all decorations, lights, wire, tinsel, and tree bags. Flocked trees are not accepted and may be placed in the trash.

Residents also may contact their trash hauler to see if they accept trees for disposal. A fee may be charged.

Ramsey County yard waste sites do not accept evergreen decorations like wreaths, swags, and boughs. These items usually contain wire and other decorations that cannot be disposed of at a yard waste site.

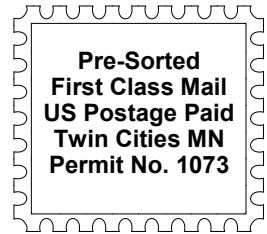
Due to the threat of invasive tree insect Elongate Hemlock Scale (EHS), the Minnesota Department of Agriculture recommends you do not leave your holiday tree in your yard all winter. Elongate Hemlock Scale is a threat to holiday greenery as well. Place holiday greenery in a plastic bag and put it in your trash. Do not burn wreaths or other evergreen décor.



City of Lauderdale

1891 Walnut Street
Lauderdale, MN 55113
www.lauderdalemn.org

**Return Service
Requested**



Shop at City Hall for Lauderdale branded apparel. Sizes were replenished!

Short-sleeve t-shirts: \$13
Long-sleeve t-shirts: \$16
Sweatshirts: \$22
History books: \$25
Mugs: \$7

The City would appreciate your feedback! Please feel free to call or visit us at City Hall or email your questions or comments to Heather.Butkowski@lauderdalemn.org. Also, please contact City Hall with any changes to your name, address, or phone number.