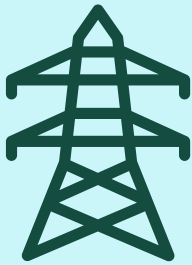
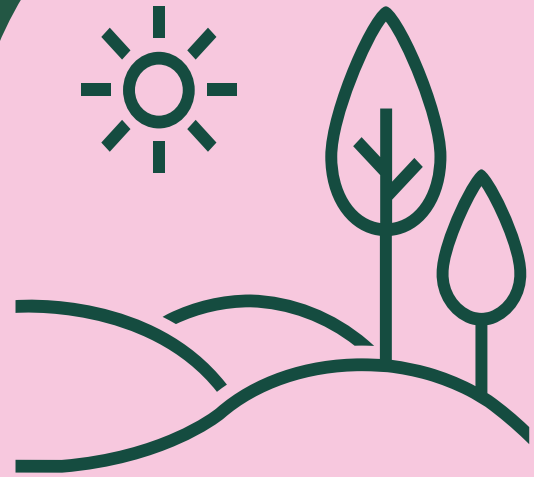




Thinking About Planting a Tree in Your Yard?

Some things to consider:



Above Ground

Look out for power lines!

- Plant trees with a max height of 25 feet at least 20 feet from power lines.
- Plant trees with a max height of 40 feet or more at least 50 feet from power lines.
- Plant trees more than 10 feet from fire hydrants and utility poles.
- Plant trees at least 30 feet from stop signs and traffic lights.



Below Ground

Avoid underground utilities.

- Plant trees at least 10 feet from underground gas, sewer and water lines; farther for large or fast-growing trees.
- Trees too close to underground utilities can be damaged when maintenance needs to be completed.
- Expanding roots can clog pipes.



Type & Location

What and where to plant?

- Plant diverse species to reduce the impact of future pests and disease.
- Ensure the tree species does well in our climate- USDA hardiness zone 4.
- Avoid planting close to property lines to prevent disputes with neighbors.
- Request permission from the City Administrator if planting in the boulevard.

Always call 811 before you dig!