



Lauderdale
POPULATION 2,271

Lauderdale Crier

City of Lauderdale, MN

APRIL-JUNE 2023

MESSAGE FROM THE MAYOR

Warm Spring Greetings,

First, I want to thank those who attended Ramsey County's open house regarding Eustis Street on March 7. It was such a good crowd, I know some didn't get their questions answered by the County's engineering staff. See page 4 for staff's summary of the project's progress and the issues county staff, city staff, and adjacent property owners are discussing as the scope of the project gets a little clearer.

For context, Ramsey County approached the City Council late last summer with their goal to improve Eustis Street south of Larpenteur Avenue and turn ownership over to the City at the end of the construction project. Ramsey County would pay for all improvements including those items that typically require a cost-share by the City.

While project planning is in full swing, the question before the City Council is different. Is it in the City's best interest to take ownership of the road? Obviously, we want to have a well-designed and constructed road that addresses the pedestrian safety issues. But, we know that roads only last so long and it will need maintenance and reconstruction in the decades ahead that will be wholly paid by the City instead of the County. This is a higher volume roadway with significant truck traffic which is different than the rest of the city streets.

If the City does not take ownership of the road, the County still will provide all of the improvements needed from new road surface, storm sewer drainage system, sidewalks, and pedestrian improvements at Larpenteur Avenue. The difference would be the City's requirement to share some of the improvement costs for concrete curb and gutter, traffic signals, right-of-way acquisition, retaining walls, and the sidewalk. Their initial cost-share estimate in 2021 was \$413,000. As the scope of the project has grown, County staff are recalculating the City's cost if there isn't a transfer of ownership. That information will be presented at one of our April meetings by Ramsey County staff.

The City Council has listened to the County staff's proposal and need your feedback on the best course of action. I appreciate the responses of those I have already spoken with. There is a lot of pent up frustration with that road and what I hear is that people want it fixed and done well, no matter the tradeoff. Please continue to reach out with your thoughts. Another open house with Ramsey County will be advertised in the next newsletter.

In other news, the Council continues to find ways to make the city more equitable and inclusive. The University of Minnesota's Mapping Prejudice project (www.mappingprejudice.umn.edu) identified a handful of properties in Lauderdale with racial covenants on property deeds that would prevent the transfer of the property based upon race but not for a US Supreme Court decision in 1948 that made this illegal. I think we all would like to see those vestiges of discrimination removed from property records. The City Council passed a resolution in February supporting Just Deeds (www.justdeeds.org) which allows property owners with restrictive covenants access to pro bono lawyers who will work with them to change their deeds. If you have any questions about this work, don't hesitate to call city staff.

Fondly,
Mayor Mary Gaasch

APRIL — JUNE COMMUNITY CALENDAR

Tuesday, April 11	City Council Meeting	7:00 p.m.
Tuesday, April 25	City Council Meeting	7:00 p.m.
Tuesday, May 9	City Council Meeting	7:00 p.m.
Tuesday, May 23	City Council Meeting	7:00 p.m.
Monday, May 29	Memorial Day	City Hall Closed
Tuesday, June 13	City Council Meeting	7:00 p.m.
Monday, June 19	Juneteenth	City Hall Closed
Tuesday, June 27	City Council Meeting	7:00 p.m.

CITY & EMERGENCY CONTACT INFORMATION

City Hall Hours: Monday - Friday 8:00 a.m. to 4:30 p.m. Phone: (651) 792-7650 www.lauderdalemn.org

CITY COUNCIL MEMBERS

Mayor Mary Gaasch
1736 Malvern St; 651.645.5918

Council Member Jeffrey Dains
1743 Carl St; 651.645.7068

Council Member Sharon Kelly
1814 Malvern St; 651.230.3062

Council Member Duane Pulford
1757 Eustis St; 507.254.5166

Council Member Evan Sayre
1841 Carl St; 651.343.2782

To send an email to all council and staff:
council@lauderdalemn.org

CITY STAFF

Main Office: 651.792.7650
Fax: 651.631.2066

Heather Butkowski 651.792.7657
City Administrator
heather.butkowski@lauderdalemn.org

Jim Bownik 651.792.7656
Assistant City Administrator
jim.bownik@lauderdalemn.org

Miles Cline 651.792.7655
Deputy City Clerk and Treasurer
miles.cline@lauderdalemn.org

Gordy Beck 651.792.7662
Public Works Utilities and Maintenance
gordy.beck@lauderdalemn.org

Tom Douvier 651.792.7661
Public Works Utilities and Maintenance
tom.douvier@lauderdalemn.org

EMERGENCY NUMBERS

Police Emergency: 911
Police Department: 612.782.3350

Fire Emergency: 911
Fire Department: 651.224.7811

Ramsey County Dispatch: 911
Ramsey County Dispatch Non-emergency Number: 651.767.0640

Water Emergency (St. Paul Regional Water): 651.266.6868

Sewer Emergency: 911 or
651.767.0640

Illicit Discharges to the Storm Sewer:
911 or 651.792.7650 (business hours)

Xcel Energy Electric Emergency or
Outage: 1.800.895.1999

Xcel Energy Gas Emergency or Gas
Odor: 1.800.895.2999

COMMUNITY NEWS

Deterra Drug Deactivation Bags at City Hall

Lauderdale residents have two methods for disposing of unwanted prescription drugs. The Saint Anthony Police Department (SAPD) has a medical waste collection bin located inside their lobby that is available during business hours (8 a.m. to 4 p.m., Monday through Friday).

Deterra drug deactivation system bags are available at Lauderdale City Hall. Each bag disposes of 45 pills, 6 ounces of liquid, or 6 patches. You simply put the drugs inside the bag, fill with water, shake, and put in your trash can. If you are unable to come to City Hall, give City staff a call and we will have bags delivered to you.



No Mow May Coming Soon

The University of Minnesota Bee Lab website says, "...the purpose of No Mow May is to encourage people to let spring flowers in their lawns bloom before mowing. Hibernating pollinators often need a bit more time under the leaves before they can safely emerge. Leaves left on the ground provide important insulation for bees hibernating underground and for moths and butterflies that overwinter in the leaves. Leaving your leaves where they are until temperatures are above 50 degrees F for 5 consecutive days will give most of those hibernating pollinators the protection that they need." They encourage the planting of native species like violets, pussy toes, serviceberries, and bluebells to provide early spring food.

On April 11, the City Council will discuss whether to suspend the city code requirement that grass and weeds not exceed 8 inches in height during the month of May to allow residents to participate. No Mow May signs for windows will be available at City Hall. We encourage residents to buy their preferred No Mow May / bee habitat yard signs.



Forestry Corps Member Update and Resources

In the last newsletter, we introduced you to Maggie Duerwachter, the AmeriCorps member assigned to help us with forestry projects. Maggie has been a wonderful addition and accomplished much during her time here. Unfortunately for us, Maggie accepted a full-time position with another city and her last day will be April 14.

One of Maggie's accomplishments was developing information on tree planting and maintenance for our website. Often tree planting guides ignore the complexity of tree placement and species selection in urban environments with limited space and competing interests. She consolidated and simplified the information for all of us to be able to understand. I highly encourage you to visit the City's website and click on "Environment" to see the Tree Planting flyer (image to the right) and the expanded Tree Care and Planting Guide.

Best of luck, Maggie!



CITY HALL UPDATES

Status of Eustis Street Reconstruction Project

Ramsey County partnered with the University of St. Thomas to provide engineering students with real life experience on the Eustis Street reconstruction project. In fall 2022, students got the project to 30% design. The goal of this spring's class is to get the project to 60% design. The goal of the March 7 open house was to provide information on alternative options to narrow the scope of the work as it goes to final design.

A few pieces of the scope of work are known. The geotechnical report showed very poor soil and base conditions. Initially, the County hoped that portions of the road only needed resurfacing but the report shows this would not be adequate. The County also agreed to work with adjacent property owners to address broader stormwater issues in the area instead of only focusing on the roadway itself. Finally, the Larpenteur Avenue intersection will get much needed traffic lighting and accessibility improvements. There is not a lot of room so how that will happen is still to be determined.

During the open house, Ramsey County staff heard loud and clear what the Council had been saying, that a project without proper pedestrian access was a deal killer. Part of Eustis Street is in St. Paul and they built a sidewalk on the west side years ago for Ramsey County to tie into. The City negotiated for a sidewalk easement when Luther Seminary sold their student housing to Greenway Village in 2014. That secured the space for a sidewalk from Idaho Avenue to our St. Paul border about 350 feet north of Como Avenue. The question of which side to construct the sidewalk between Larpenteur Avenue and Idaho Avenue is yet to be answered as impediments exist on both sides. The first meeting with the 13 companies that own utilities in that corridor happened on March 29. Utility issues along with the need to acquire additional right-of-way for the sidewalk may ultimately dictate the location.

After these last items are evaluated, Ramsey County will host a meeting at City Hall to go over the final scope of the project. If you have questions or concerns, staff can put you in contact with the engineer working on the project.

What do Driveways, Parking Pads, Fences, Sidewalks, Retaining Walls and Swimming Pools have in Common?

The answer is that they all need permits. The permitting process requires the owner to identify property corners so that the proposed improvement is built on the applicant's property. The process also allows staff to inform applicants of other applicable zoning or construction related codes.

A site plan that delineates property corners is required with each application. You can hire a licensed land surveyors to mark them and provide you a Certificate of Survey or you may be able to find the survey makers in the corners of your yard. City Hall has a metal locator that property owners can borrow to assist with this process.

Contact Jim Bownik at City Hall at 651.792.7656 with questions or to make application.

Zoom-Zoom Speed Limit Changes

Last quarter's newsletter explained that the City Council authorized a speed study to determine whether speed limits on residential streets should be lowered. The results showed a benefit to reducing the speed limits. The Council is expected to pass a resolution in April lowering the speeds on all city-owned residential streets to 20 mph with the exception of Eustis Street north of Larpenteur Avenue and Roselawn Avenue. As those streets are identified as "local collectors," the limits can only be reduced to 25 mph.

The changes would take effect once the signage is in place which is expected on June 1, 2023. Between now and then, more information will be forthcoming through via email, Facebook, and Nextdoor.



COMMUNITY PARTNERS



Hello from St. Anthony Park Area Seniors!

SAPAS is sponsoring a five-week clay sculpture workshop at The Makery in St. Anthony Park's Milton Square at no charge. The workshop will run on Thursdays April 20 - May 18 from 2:00-3:30 pm.

We offer three sessions of self defense for Seniors through Krav Maga Minneapolis. Krav Maga helps people of all fitness levels learn how to defend themselves from common attacks using natural reactions. Seniors will learn how to be more aware and move safely when out and about. Sessions will be on Wednesdays, June 4, 14, and 21 from 10:30-11:30 a.m. outside on the lawn at 2200 Hillside Avenue.

We will host a virtual presentation on Telehealth on Thursday, May 25 at 1:00 p.m. Anglea Smithson, MD, MPH from U of MN Physicians of MHealth Fairview will explain all aspects of a telehealth visit. This presentation is great for seniors and caregivers as they navigate this style of doctor's visits.

We have a foot care nurse offering appointments at **Lauderdale City Hall**.

We continue to exercise together online through Zoom. We have a beginning Tai Ji Quan class on Tuesday and Thursday mornings starting on April 25 and chair yoga on Monday mornings. We are considering having a walking group too this spring.

To find out more about our program or register for these events, visit our website at www.sapaseniors.org or contact us at office@sapaseniors.org or 651-642-9052.

Trees: Guardians of Health, Happiness, and Equity

Join the Roseville Area League of Women Voters on Tuesday, April 18, 6:30 p.m. as they examine our urban treescape. Beyond the shade and beauty, trees mitigate climate change challenges, are key to community well-being, and are an essential feature of every neighborhood. Peter McDonagh, Horticulturist, Arborist, and renowned urban tree specialist will discuss the societal benefits of trees. Ben Shardlow, "Tree Activist," with the 100 Trees Project will share his experiences in all areas of our urban landscape. Armed with facts and practical advice, we can all become advocates for our friends, the trees!

This Zoom event is co-sponsored by Ramsey County Library and the League of Women Voters Roseville Area. Register in advance for this webinar: [Ramsey County Library \(bibliocommons.com\)](https://www.bibliocommons.com).

Note from Real Estate Equities about The Fern at 1795 Eustis Street

Real Estate Equities will be opening The Fern, an amenity-rich senior (55+) affordable housing development, in September 2023. The building will be rented to households making, on average, 50% or less of the Area Median Income (30% - 60% AMI).

The 114-unit senior housing development, comprised of one and two-bedroom affordable housing units, is located at 1795 Eustis St. The development began construction in July 2022 and will open to residents in late September 2023.

The property features a well-crafted exterior design with numerous amenity spaces such as a fitness center, clubroom with kitchen, activity room, grilling stations, and garage parking. Interiors are complete with high-quality finishes such as granite countertops, stainless steel appliances, in-unit washer and dryer, and vinyl-plank flooring.

Leasing will begin in early June 2023. Interested prospects can get updates and join the interest list for The Fern at www.REEApartments.com. Interest list members will receive leasing updates, expected rent and income limit amounts, updated drone footage of the property, and other information as REE prepares to commence leasing.

PUBLIC SAFETY UPDATES



Springtime Traffic and Pedestrian Safety

Sgt. Mike Huddle

Traffic safety is one of the major goals outlined in our department's strategic plan. To keep our community safe for drivers and pedestrians, here are a few traffic safety reminders to keep in mind this spring:

Pedestrians:

- Walk on sidewalks when they are available. If there isn't a sidewalk, walk facing traffic.
- Cross streets using crosswalks or at intersections where possible.
- At night, wear reflective clothing and/or carry a flashlight with you.
- Be aware of your surroundings and traffic.
- Obey traffic signals and signs.

Bicyclists:

State law allows bicycles to use traffic lanes for travel; all traffic laws apply to bicycles when on the road. Bicycles are required to ride with the direction of traffic (in a lane or on the shoulder), stop at stop signs and red lights, use signal turns, yield to traffic with the right of way, and obey street signs. When riding at night, a bicycle or its operator must be equipped with a white light visible from the front and a red reflector visible from the rear. The more visible you are, the safer you will be.

Motorists:

Springtime comes with unpredictable weather. Check tires, windshield wipers, brake lights, headlights, and tail lights for safe and proper operation.

Share the road. We see more people walking pets, jogging, and riding bicycles and motorcycles as the weather warms. Give others the room they need to stay safe. Remember that bicyclists have a right to use the roadway. Be patient and pass only when safe to do so and allow a minimum of three feet clearance when overtaking a bicycle (MN Statute 169.18 Subd. 3(3)).

Watch for leftover sand used to promote winter traction once the ice and snow have melted in the springtime. The excess sand can cause slippery conditions and the need to increase your stopping distances. Look out for potholes. Be careful when maneuvering to avoid a pothole and be sure you have clearance to swerve around it. Potholes can damage your vehicle, but causing a collision can be far worse.

Note from St. Paul Fire about Night to Unite

Night to Unite is August 1, 2023. If you are interested in having the St. Paul Fire Department presence at your event – it is not too early to get your request in. Please register using the following link:

<https://app.smartsheet.com/b/form/cc56d24ff1db49389c17a2b78cb64e78>



Lt. Dan Diegnau Retires

Lt. Dan Diegnau began his career with the department in 1990. He has served as patrol officer, Field Training Officer, sergeant, and lieutenant. Lt. Diegnau has played a significant role in training current and past SAPD officers, which impacted the strong culture of the department. He will be missed - please join us in wishing him well!

Jim South Named Sergeant

Officer South was named as the department's next sergeant and began his new role on Feb. 27. Officer South has been a member of the St. Anthony Police Department since 2005, and has served as patrol officer, bike officer, Ramsey County SWAT Team member, a Crisis Intervention Trainer, and plays a key part in the department's community engagement efforts. Officer South founded the department's Kids Safety Camp and is the organizer of the annual Cops vs. Kids Basketball challenge. Congratulations, Officer South!



ENVIRONMENTAL STEWARDSHIP

FERTILIZER: How Much is Too Much?

To protect our waters, there is a state law banning the use of lawn fertilizers containing phosphorus. Most soils in the metro area have adequate amounts of phosphorus, so adding more through fertilizers has no benefit to the lawn but causes problems downstream. To buy the right, and legal, kind of fertilizer for your lawn, look for the middle number. On any bag or box of fertilizer, there is a string of three numbers. The middle number indicates phosphorus (phosphate) content and will read "0" on a phosphorus-free product. Better yet, recycle the nutrients in your grass clippings by mulching them back into your lawn.

We are lucky in Lauderdale to be so close to the University of Minnesota Soil Testing Laboratory. They will test your lawn or garden soil for organic matter, phosphorus, potassium, pH, and estimated texture for only \$17. Based on these test results and the type of plants to be grown, you will receive fertilizer recommendations calculated to provide adequate levels of phosphorus and potassium for healthy plant growth, without adversely affecting the environment.

Information about how to get your soil tested can be found at: soiltest.cfans.umn.edu/testing-services.



Minnesota Recycling Works

Have you ever questioned if recycling is worth it? Beyond saving energy and protecting natural resources, recycling also supports vital industries.

Recycling is the process of collecting materials that would otherwise be thrown away and turning them into new products. Our cans, bottles and paper are dropped off at a local facility where people and machines sort the recycling into material types which are sent to many different companies:

- **Paper and cardboard** are made into newspapers, toilet paper rolls and cereal boxes at five paper mills in Minnesota.
- **Cartons** like juice boxes are sent to a company in Wisconsin that makes a material for new paper products.
- **Aluminum cans** get turned into new cans, wire, siding and more at plants in the south.
- **Steel cans** like those used for soup are made into steel beams in Chicago.
- **No. 1 plastic water and soda bottles** are shipped to other states to be made into new bottles, deli food containers and carpet.
- **No. 2 plastic containers like milk jugs** are transformed into low-maintenance lumber by companies like Avon Plastics in Paynesville. They also are made into more bottles or irrigation tubing for farmers.
- **No. 5 plastic tubs like cottage cheese containers** are used to create food containers, car parts, paint cans, and more by companies in other states.
- **Glass bottles and jars** are sorted by color in Saint Paul. Clear glass goes to Anchor Glass in Shakopee to make condiment bottles. Brown glass is sent to Illinois to make beer bottles.

Our recycling is wanted by many companies in our state and across the country. Help support local recycling business:

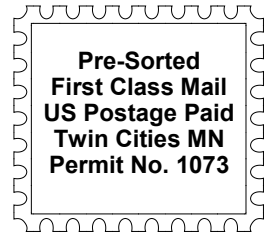
- **Stick to the basics:** Recycle the items listed above.
- **Keep it loose:** Empty recycling into your bin; no plastic bags.
- **Check with your recycling hauler or Ramsey County** (RamseyRecycles.com/AtoZ or 651-633-3279) for everything else.



City of Lauderdale

1891 Walnut Street
Lauderdale, MN 55113
www.lauderdalemn.org

**Return Service
Requested**



Shop at City Hall for
Lauderdale branded
apparel:

Short-sleeve t-shirt: \$10
Long-sleeve t-shirt: \$12
Hoodies: \$25
History books: \$25
NEW Mugs: \$7

The City would appreciate your feedback! Please feel free to call or visit us at City Hall or email your questions or comments to Heather.Butkowski@lauderdalemn.org. Also, please contact City Hall with any changes to your name, address, or phone number.